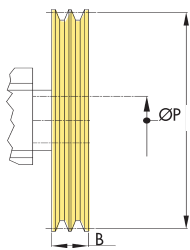
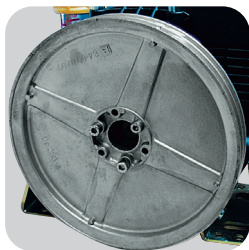
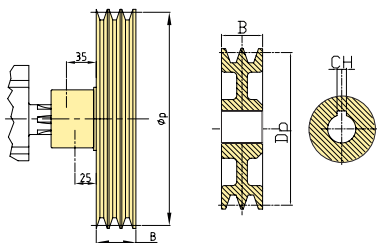
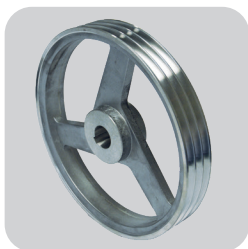


ACCESSORI D'AZIONAMENTO DRIVE ACCESSORIES



Pulegge in lega leggera
Light alloy pulleys

Mod. Mod.	Tipo Type	ØP	B	Codice Part Number
Poly 2073 2085-2105 VS Poly 2120 2150 VS VD	2A	250	35	31.8843.97.3
Poly 2120 2150 VA VDA				31.8907.97.3
Poly 2150 2180 VS VD				31.8908.97.3
MINIPOLY PA VF VC VM				31.0255.97.3
		350		31.8933.97.3
				31.9210.97.3
Poly VS VD PPS PBO IDB VD	3A	310	56	31.8463.97.3
PA VF VC VM				31.8671.97.3
CK P	4A	295	68	31.8363.97.3



Pulegge
Pulleys

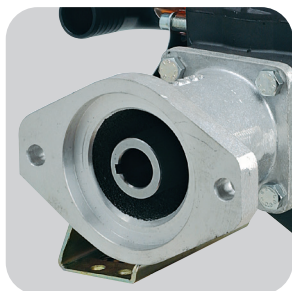
Mod. Mod.	CH	Tipo Type	ØP	B	Codice Part Number
C40	8	2A	80	35	31.8730.97.3
			90		31.8731.97.3
			130		38.9873.97.3
			160		31.8734.97.3
Poly 2073 - 2085 PPS 100 VP	10	3A	310	56	31.8672.97.3
C53 - C75 P - PP					31.8722.97.3
CK 73 - 110 - 120 CK 146 - 220 PP					31.8841.97.3
CK 73 - 110 - 120 CK 146 - 220 P					31.8463.97.3



Flangia per moltiplicatore. Le dimensioni variano in base al tipo di applicazione
Overgear flange. Sizes vary according to the application type

Marca Brand	Mod. Mod.	Codice Part Number	Modello Pompa Pump model
COMER BIMA FIENI	D729A-D21F-D7A-D27B M30N-M47N-M60N CV/F1	31.8727.97.3	PPS 100 (VM) - POLY 2073 - 2085 (VM) - PA-PA/S (VM)
COMER BIMA FIENI	D729A-D21F-D7A-D27B M30N-M47N-M60N CV/F1	31.8726.97.3	PBO (MF) - IDB (VM) - PPS 1211-1212-1613-1615 (VM)
BIMA	CAR 3 (FORATURA INTERNA)	31.8767.97.3	PPS 100 (VM) - POLY 2073 - 2085 (VM) - PA (VM)
BIMA	M60N	31.8962.97.3	POLY 2210-2250-2260-2300 (VD)
FIENI	V1N-VC2	31.9245.97.3	POLY 2073 - 2085 (VM) - PA (VM)
HYDR-APP	ML52	31.9125.97.3	POLY 2120-2150
HYDR-APP	ML52	31.8943.97.3	IDB (VD)
HYDR-APP	ML52	31.8944.97.3	POLY 2210-2250-2260-2300 (VD)
HYDR-APP	ML52	31.8958.97.3	CK73P-CK110P-CK120P

ACCESSORI D'AZIONAMENTO DRIVE ACCESSORIES



Marca Brand	Codice Part Number	Modello Pompa Pump model
FLANGIA PER POMPA IDRAULICA GRUPPO 2 ALBERO SCANALATO DIN 5482 (28X25 Z=15) FLANGE FOR HYDRAULIC PUMP GROUP 2 SPLINED SHAFT DIN 5482 (28X25 Z= 15)	31.8957.97.A	POLY 2180-2210-2250-2260- 2300 (VD)

Flangia per motori e pompe Idrauliche. Le dimensioni variano in base al tipo di applicazione
Flange for hydraulic motors and pumps. Sizes vary according to the application type

Albero Shaft	Flangia Overgear	Modello Pompa Pump model	Codice Part Number
Ø5/8" L=33.3	2 fori C= Ø 63 l= 80	MINIPOLY VF	32.1202.97.3
Ø16 L=33.3			32.1203.97.3
17x14 DIN5482 L=33.3			32.1204.97.3
Ø1" L=78	SAE "B" C= Ø 101 l= 146	MINIPOLY VF PA 330-430-530-730 PA/S 830-930 VF-VC	32.1203.97.3
		POLY 2073-2085 VA	32.1204.97.3
Ø1" L=55.3	SAE "A" 2 fori C= Ø 82.6 l=106.4	MINIPOLY VF PA 330-430-530-730 PA/S 830-930 VF-VC	32.1200.97.3
		POLY 2073-2085-2105-2120-2150 VS	31.8966.97.3
		POLY 2073-2085 VA	31.9228.97.3
		POLY 2180-2210-2240-2260-2300 VD	31.8967.97.3
		PPS 100 VD IDB 1304 VD(*)	31.9121.97.3
Ø25 L=55.3	SAE "A" 2 fori C= Ø 82.6 l=106.4	CK (P)	31.9223.97.3
		POLY 2073-2085-2105-2120-2150 VS	31.8896.97.3
		POLY 2180-2210-2240-2260-2300 VD	31.8895.97.3
		MINIPOLY VF PA 330-430-530-730 PA/S 830-930 VF-VC	32.1201.97.3
		PPS 100 VD IDB 1304 VD(*)	31.9120.97.3
		PBO VD (*)	31.8899.97.3
Ø32 L=66	SAE "A" 4 fori C= Ø 82.6 l= 106.4	IDB 1100-1250-1400-1600-1800 VD (*) PPS 1211-1212-1613-1615 VD (*) POLY 2400 VD	31.1761.97.3
		POLY 2180-2210-2240-2260-2300 VD	31.8904.97.3
		PBO VD	31.8914.97.3
		PPS 100 VD IDB 1304 VD	31.8910.97.3
		IDB 1400-1600-1800 VD PPS 1211-1212-1613-1615 VD POLY 2400 VD	31.1762.97.3

(*) Pompe che possono funzionare ad una pressione inferiore alla nominale causa prestazioni del motore insufficienti
 L= lunghezza C= centraggio l=interasse



GIUNTO - Coupling

L.80	POLY 2073-2085-2105-2120-2150-2180	31.9147.97.3
L.130	POLY 2210-2240-2260-2300-2400	31.8772.97.2

PROTEZIONE - safety guard

POLY	2180-2210-2240-2260-2300-2400	28.0079.61.2
------	-------------------------------	--------------

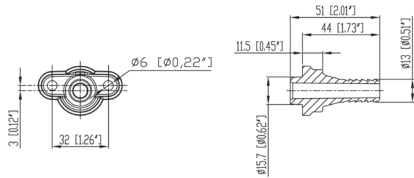
Giunto e protezione per accoppiamento pompe poly in serie.
Coupling and safety guard to drive twin pumps (Polypumps series).

ACCESSORI DI COLLEGAMENTO

ACCESSORIES AND PARTS TO CONNECT PUMP WITH PRESSURE REGULATO

Kit di mandata pompa

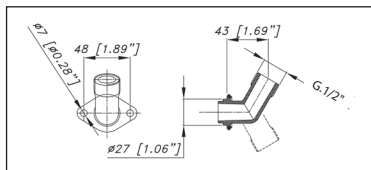
Outlet kits for pumps



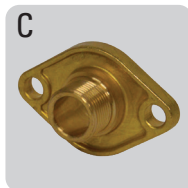
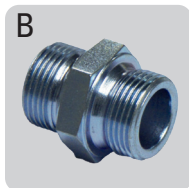
KIT LATO POMPA - PUMP SIDE KIT		
Mod. - Mod.	Codice Part Number	STD./ OPT.
Poly 2020 L.P. - 2025 L.P. 2020 H.P - 2025 H.P*	31.8975.97.3	0
*Versioni per valvole N.P.R.20 e P.B.P Versions for pressure regulators N.P.R. 20 and P.B.P.		



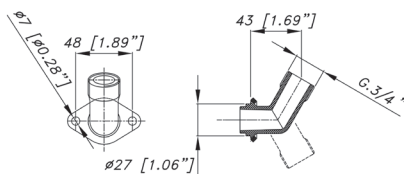
KIT LATO POMPA - PUMP SIDE KIT				
Mod. - Mod.	Tipo	Out	Codice Part Number	STD./ OPT.
Poly 2030*	A	19	31.9159.97.3	0
	A	25	31.9161.97.3	
	B	19	31.9160.97.3	
	B	25	31.9162.97.3	
*Versioni per valvola Karin Versions for pressure regulators Karin				



KIT LATO POMPA - PUMP SIDE KIT		
Mod. - Mod.	Codice Part Number	STD./ OPT.
Poly 2030* PA 330.1-C40	31.8916.97.3	0
PA 430.1-530		S
*Versioni per valvola Karin Versions for pressure regulators Karin		



Mod. - Mod.	Tipo	Out	Codice Part Number	STD./ OPT.
PBO - PPS - IDB 1400 - 1600 - 1800 - 2000	A	G. 3/4"	83.5063.28.2	S
IDB 1100 - 1250	C		35.0018.28.2	
C53.2	B	G. 1/2"	83.5051.10.2	0
CK		G. 3/4"	83.5060.35.2	
CX		83.5062.30.2		



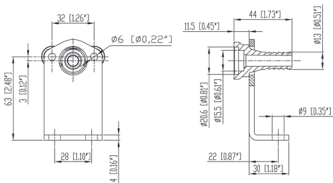
KIT LATO POMPA - PUMP SIDE KIT		
Mod. - Mod.	Codice Part Number	STD./ OPT.
Poly 2030* PA 330.1-430.1-530-C40-C75	31.8917.97.3	0
PA 730.1-830		S
*Versioni per valvola Karin Versions for pressure regulators Karin		

ACCESSORI DI COLLEGAMENTO

ACCESSORIES AND PARTS TO CONNECT PUMP WITH PRESSURE REGULATO

Kit A.C.D. per regolatori di pressione

Remote mounting kits for pressure regulators



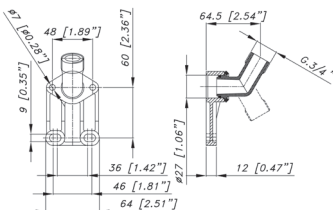
Mod. - Mod.	Codice Part Number	STD./OPT.
N.P.R. 20 - P.B.P.	31.8974.97.3	0



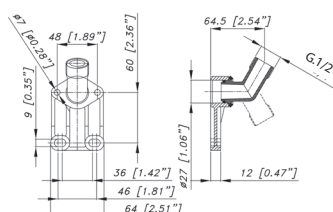
Mod. - Mod.	Tipo	Out	Codice Part Number	STD./OPT.
Karin Sting Sting Plus	A	19	31.9154.97.3	0
	A	25	31.9156.97.3	
	B	19	31.9155.97.3	
	B	25	31.9157.97.3	



Mod. - Mod.	IN	Out	Codice Part Number	STD./OPT.
Moby	G. 3/4"	N°2 G. 1/2"	24.6021.97.A	0
		N°3 G. 1/2"	24.6025.97.A	



Mod. - Mod.	Codice Part Number	STD./OPT.
Karin - Sting - Sting Plus	31.8912.97.3	0



Mod. - Mod.	Codice Part Number	STD./OPT.
Karin - Sting - Sting Plus	31.8911.97.3	0
In abbinamento a pompe di portata massima 50 l/min To be fitted for pumps performing max.50 l/min -13.2 US G.P.M.		

ACCESSORI DI COLLEGAMENTO

ACCESSORIES AND PARTS TO CONNECT PUMP WITH PRESSURE REGULATO

Kit portagomma per kit accessori comandi a distanza

Hose tail kit for remote mounts kit



Mod. A.C.D. Rem.mounting kit type	Ø PTG. HOSE TAIL	Codice Part Number
G. 1/2"	12 [0.47"]	24.9012.97.3
G. 3/4"	17 [0.66"]	24.9013.97.3
	20 [0.78"]	24.5398.97.3

Kit portagomma per kit accessori comandi a distanza

Hose tail kit for remote mounts kit



Modello Pompa Pump model	Modello Valvola Press.regulator model	IN		Codice Part Number
PBO IDB PPS	MOBY	Dritto girevole Straight-swing	G. 3/4"	24.9802.97.3
		90° Girevole 90° Swing	G. 3/4"	24.9801.97.3
C53.2	KARIN - STING - STING PLUS	Dritto a flangia Straight- flanged type	G. 1/2"	31.8743.97.3
CK73			G. 3/4"	31.8744.97.3

Kit manometro per N.P.R. 20

Pressure gauge kit for NPR 20



94.9849.97.3